



# ALPHALINER



---

## Evolution of carriers fleets

---

### CONTENTS

Graph - Evolution of main carriers market shares 2000-2009

Graph - Evolution of TOP 5 carriers fleets - September 2005 to April 2009

Graph - Evolution of TOP 10 carriers market share 2000-2009

Series of 22 carriers fleet graphs with corporate data

- > A.P. Möller-Maersk
- > Mediterranean Shipping Co (MSC)
- > Evergreen Group
- > Hapag-Lloyd
- > China Shipping Container Line (CSCL)
- > COSCO Container Line (COSCON)
- > Hanjin Shipping
- > NOL-APL
- > Nippon Yusen Kaisha (NYK)
- > Mitsui-OSK Lines (MOL)
- > Kawasaki Line (K Line)
- > Orient Overseas Container Line (OOCL)
- > Yang Ming Line
- > Zim Integrated Shipping Services Ltd (ZISS)
- > CSAV Group
- > Hamburg Süd Group
- > Hyundai M.M.
- > Pacific International Lines (PIL)
- > Wan Hai Lines
- > United Arab Shipping Co (UASC)
- > MISC Berhad
- > Iran Republic Islamic Shipping Lines (IRISL)

Note on source : These graphs are derived from historical figures extracted from the Alphaliner database

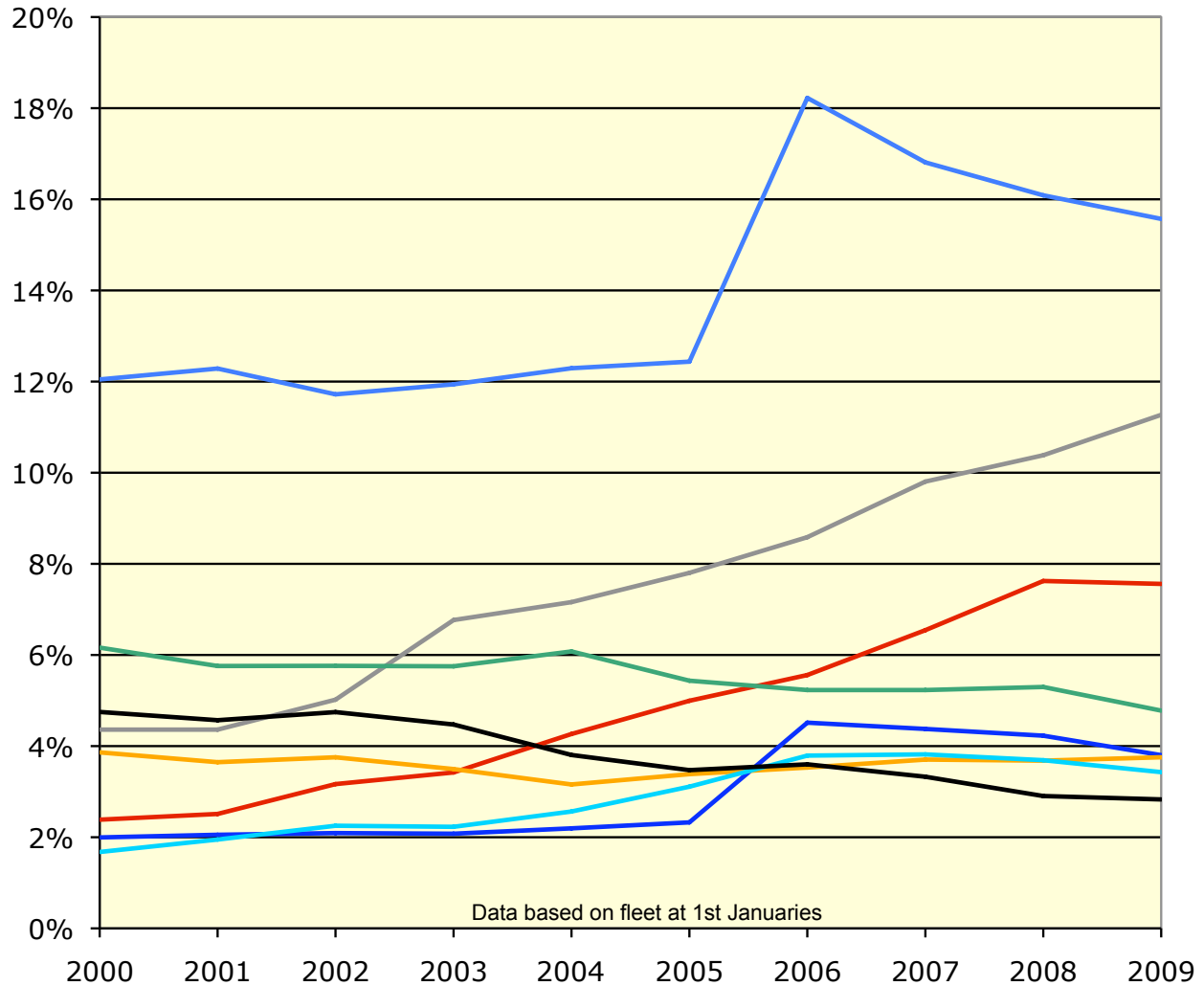
---

The information enclosed in the present document is given as guidance only and in good faith without guarantee.

*The present document is extracted from a wider document available to Alphaliner subscribers.*

# Evolution of market shares 2000-2009

- Main Carriers -  
Source : Alphaliner



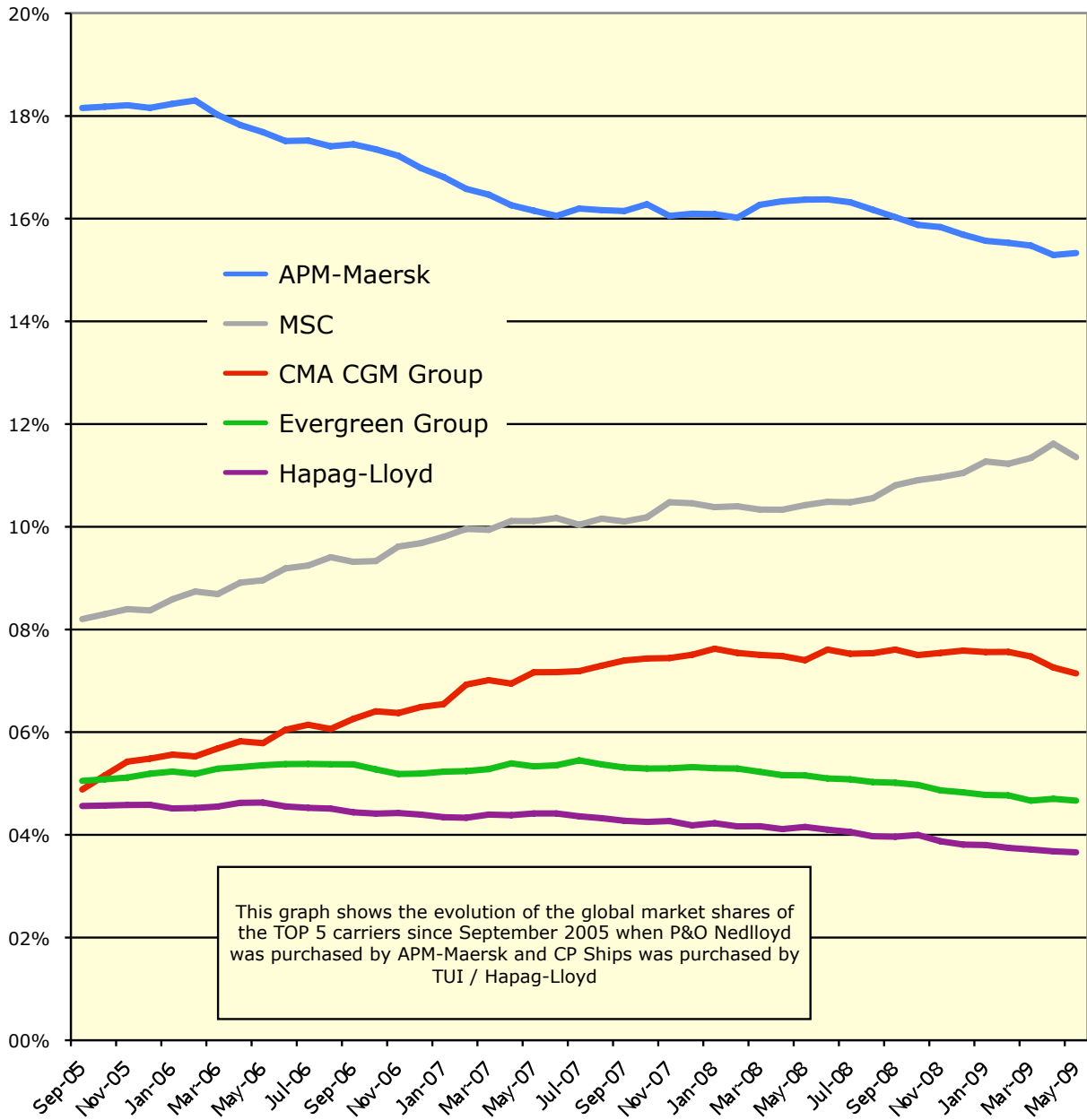
- APM-Maersk
- MSC
- CMA CGM Group
- Evergreen Group
- Hapag-Lloyd
- COSCO Container L.
- CSCL
- Hanjin / Senator

© Alphaliner 1999-2009

## Evolution of Global market shares - Main carriers

From September 2005 to May 2009

Source : Alphaliner

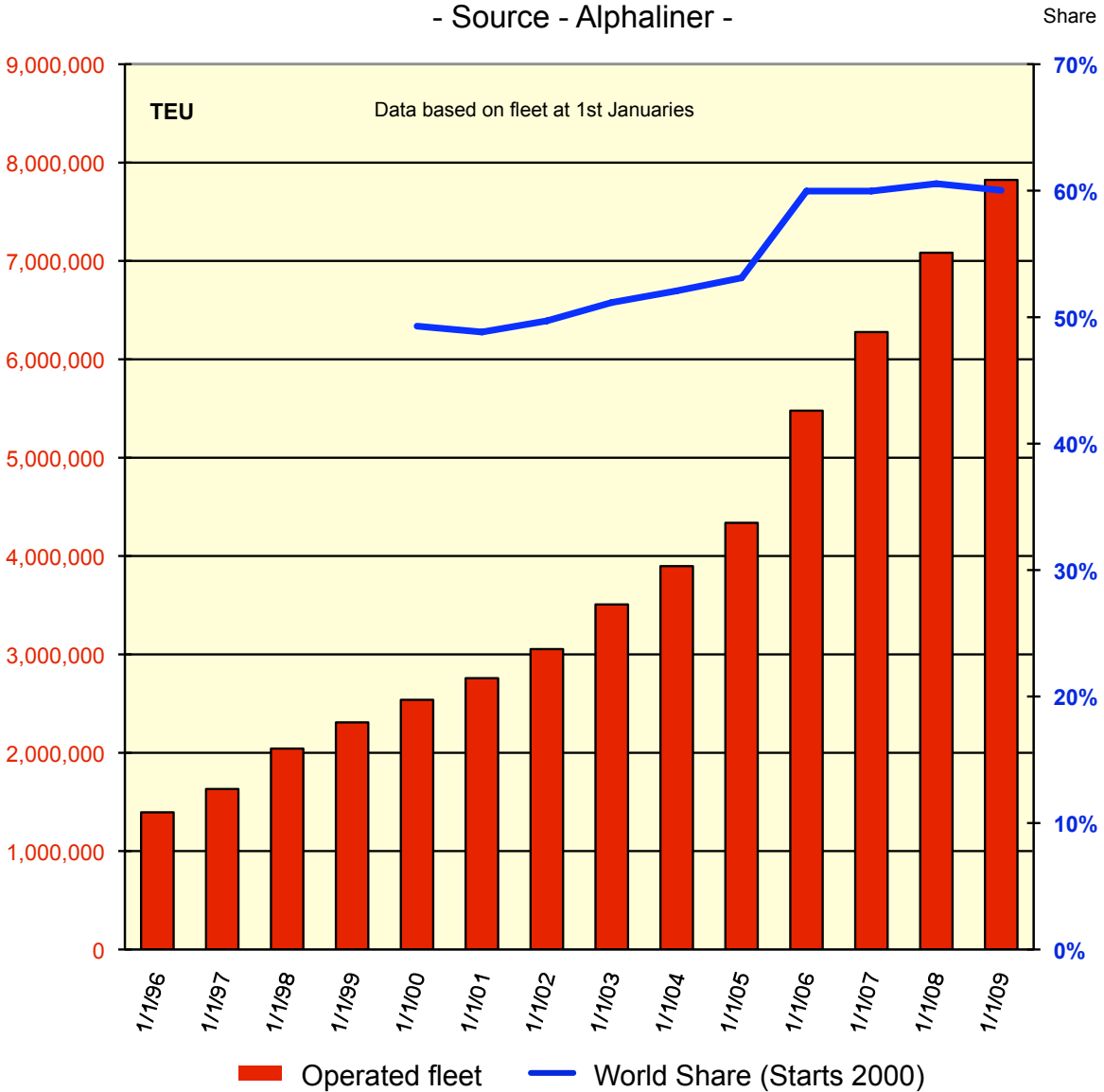


This graph shows the evolution of the global market shares of the TOP 5 carriers since September 2005 when P&O Nedlloyd was purchased by APM-Maersk and CP Ships was purchased by TUI / Hapag-Lloyd

## Evolution of operated fleet - 1996-2008

### TOP 10 Carriers

- Source - Alphaliner -

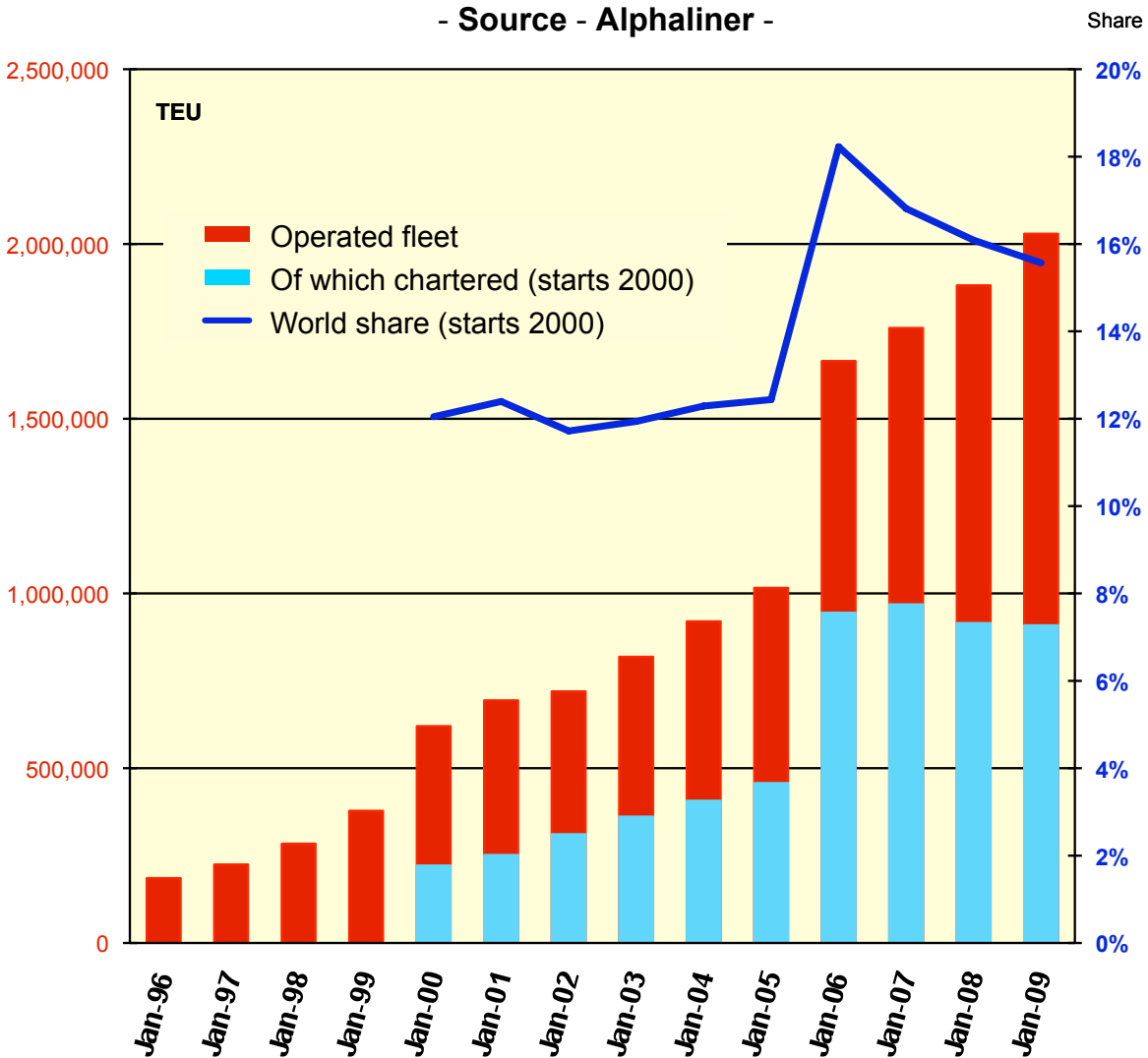


- > The cumulated fleets of the TOP 10 carriers have trebled between Jan 2000 and Jan 2009
- > The market share of the TOP 10 carriers has increased from 50% to 60% from Jan 2000 to Jan 2006  
It has stagnated since Jan 2006 around 60%

## Evolution of operated fleet - 1996-2009

### A.P. Möller-Maersk

- Source - Alphaliner -



Data based on fleet at 1st Januaries

Notes :

\* APM-Möller-Maersk is listed on the Copenhagen Stock Exchange

A.P. Möller-Maersk was founded in 1886 by Captain Peter Maersk Möller

- > 1999 - A.P. Möller (APM) bought Safmarine
- > 1999 - A.P. Möller (APM) bought Sea-Land Service
- > 2002 - A.P. Möller (APM) bought Torm Liner service
- > 2005 - A.P. Möller (APM) bought Royal P&O Nedlloyd